

The eHouse



STRINE
ENVIRONMENTS

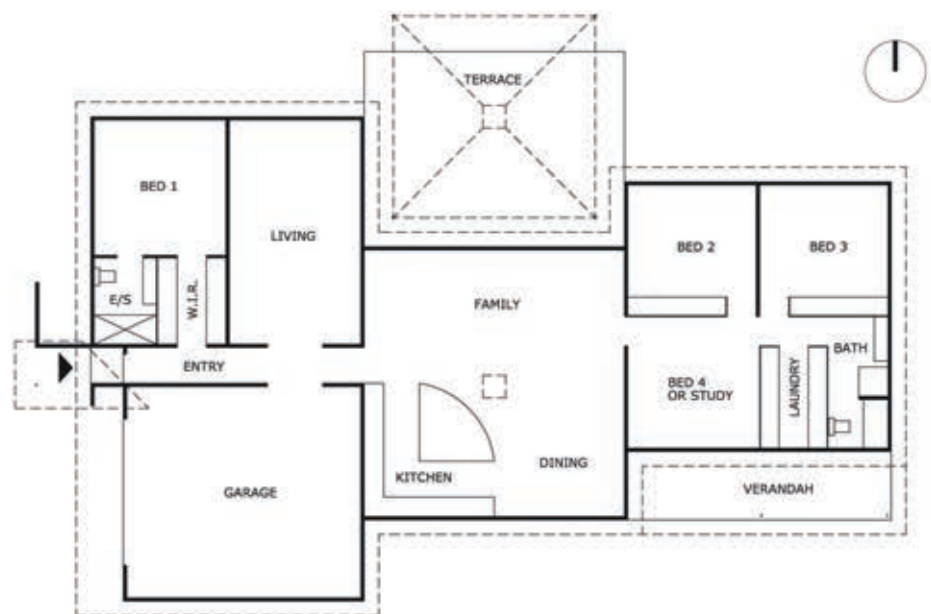
The elegant and efficient eHouse design blends the ethos of Balinese spaces with early Australian homesteads. Linked pavilions create highly functional living spaces that flow to a generous terrace on the north side, perfect for entertaining. A raked pyramidal ceiling is a standout feature in the large central pavilion.

Thermally stable and beautifully proportioned, the eHouse combines sharp, contemporary design with superb comfort - no matter what the temperature is outside.



The eHouse

Living area	207 m ²
Garage	38 m ²
Verandah	17 m ²
Total	262 m ²



The eHouse

The eHouse is built using out highly insulated thermal panels that provide unbeatable thermal mass and insulation from extremes in temperature as well as suburban noise, creating a calm and relaxing interior.

It comes with many Strine innovations including a solar chimney for night time venting to flush away hot air.



STANDARD INCLUSIONS

- Highly insulated precast concrete sandwich walls
- Highly insulated burnished and sealed concrete floors
- Raked ceilings to family/kitchen/dining pavillion
- Ceiling fans
- Solar chimneys
- Flyscreens
- Flexible joinery walls
- Adjustable thermal mass walls
- Quality joinery, fittings and appliances throughout

OPTIONAL EXTRAS

- Heat pump hot water system
- Northern steel pergola
- Southern verandah
- Rainwater tank
- Photovoltaic solar electricity system
- Sustainable landscaping and paving
- Courtyard walls
- Inslab heating to bath, ensuite and study



**BUILDING PERFECT SOLUTIONS
THAT DON'T COST THE EARTH**



STRINE
ENVIRONMENTS

Balanced Living
Unit 4, 33 Lorn Road
Queanbeyan NSW 2620

T 02 6282 4877
E mail@strineenvironments.com.au
W strineenvironments.com.au

Design ABN 31 109 594 541 ACN 109 594 541
Homes ABN 45 083 169 153 ACN 083 169 153
Architects Licence ACT 654 NSW 4802
Builders Licence ACT 199811469 NSW 100225C



STRINE
DESIGN

STRINE
HOMES

STRINE
CONSTRUCTION