

The eHouse



STRINE
ENVIRONMENTS



A quintessentially Australian design that blends the ethos of Balinese spaces and early Australian Homesteads.

The linked pavilions create highly functional living spaces that flow to a beautiful northern courtyard. **The eHouse** is architecturally timeless and elegant providing the ultimate in high quality living all year round.



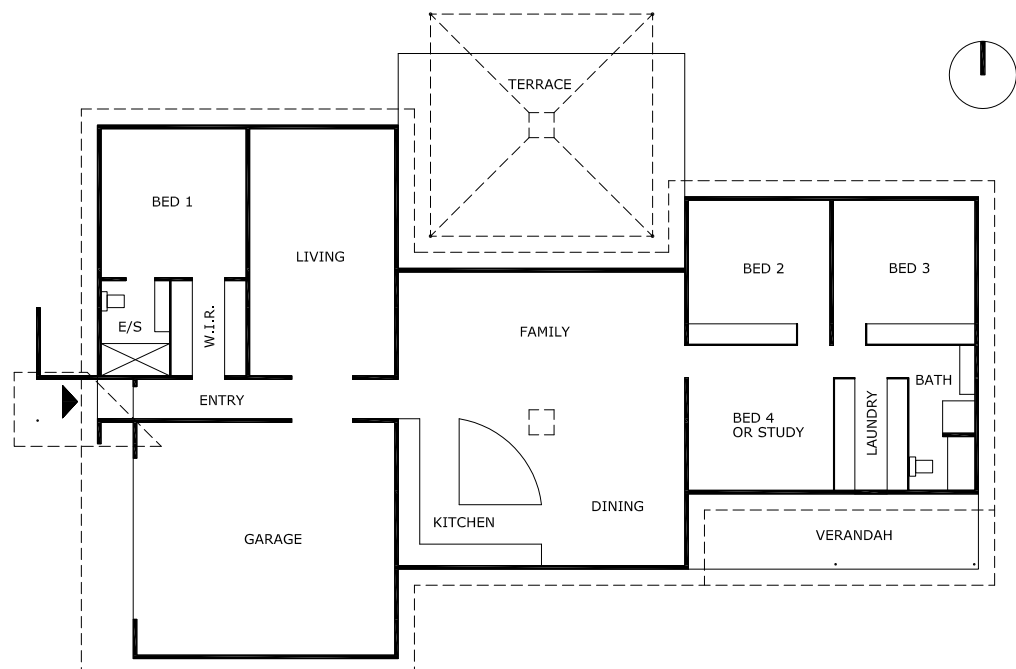
The eHouse

Living area 207m²

Garage 38 m²

Verandah 17 m²

Total 262 m²



The eHouse

Designed to harness the climate in order to minimise energy use and to maximise light and space. Seamless integration of indoor and outdoor living spaces is fundamental to all Strine houses.



STANDARD INCLUSIONS

- Concrete floor
- Highly insulated sandwich constructed precast walls
- Timber doors and frames
- Raked ceilings to living area
- Category 5 cable throughout
- Ceiling fans throughout
- Fly screens to all windows
- Quality joinery and fittings throughout
- Stainless steel appliances
- WELS rated tap ware
- Back to wall toilet suite

OPTIONAL EXTRAS

- Pigmented concrete floor
- Glass splash backs and stone benches
- Endless Solar hot water system
- In-slab heating to bath, ensuite and study to south
- Category 7 cable throughout to communications hub
- Solar chimneys
- Cent-a-meter
- Rainwater tanks
- Pump to switch between tank and mains
- Steel pergola and terrace to north Family / Kitchen / Dining
- Verandah and terrace to south
- Photovoltaic system
- Grey water system
- Adjustable shade awnings
- Sustainable organic edible garden design
- Courtyard walls



BALANCED LIVING BUILDING ENVIRONMENTS THAT DON'T COST THE EARTH

STRINE ENVIRONMENTS

Unit 4, 33 Lorn Rd
Queanbeyan ACT 2620

P 02 6282 4877 F 02 6281 3159

E mail@strinedesign.com.au

W strinedesign.com.au

* Subject to conditions



STRINE
ENVIRONMENTS



STRINE
DESIGN



STRINE
BUILDING