

# The Millennium House



**STRINE**  
ENVIRONMENTS

Strine's classic curved roof and unbeatably efficient design layout and building footprint. This simple and efficient passive solar design has interchangeable modules that provide flexibility and the opportunity for future extensions for changing families and lifestyle needs.

This house is so efficient in design and performance that we can give you an extra 5m<sup>2</sup> for free!



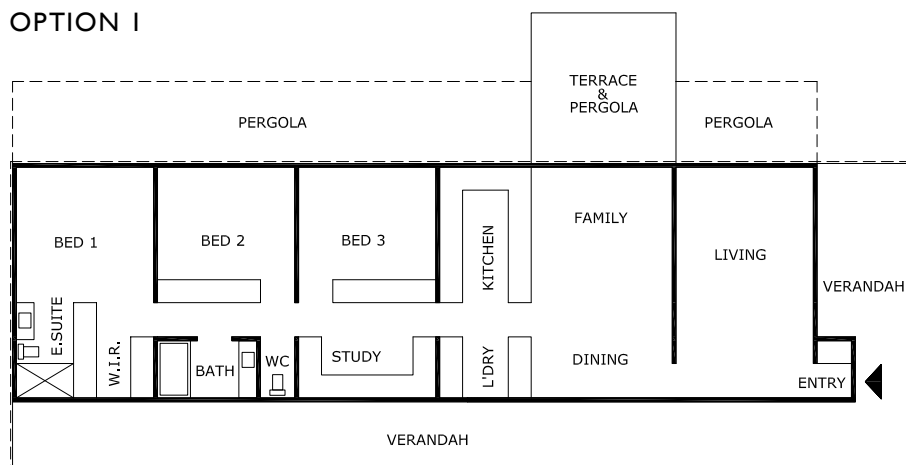
## The Millennium House

Area Option 1 140m<sup>2</sup>

Area Option 2 141m<sup>2</sup>

Area Option 3 149m<sup>2</sup>

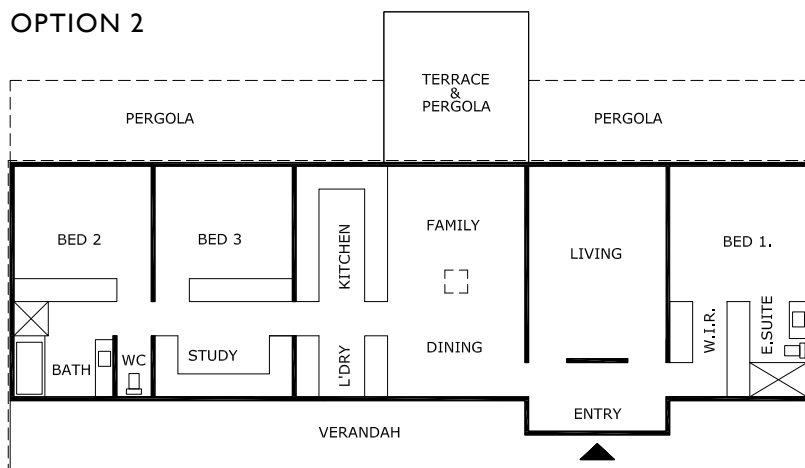
### OPTION 1



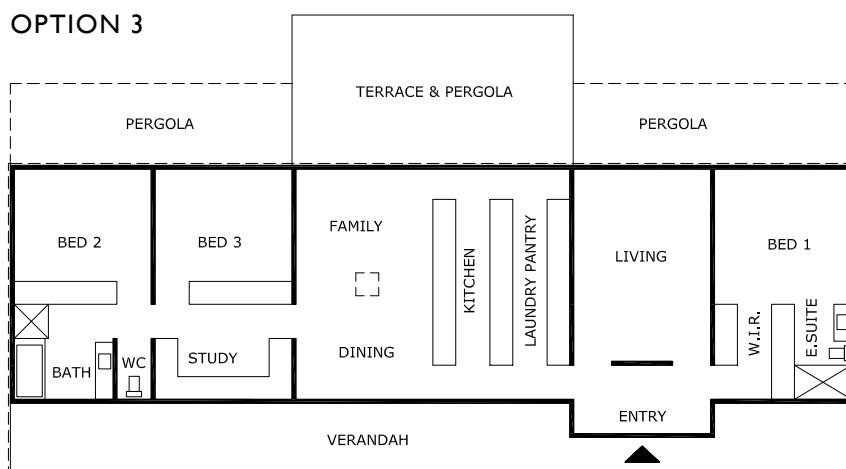
# The Millennium House



## OPTION 2



## OPTION 3



### STANDARD INCLUSIONS

- Concrete floor
- Highly insulated sandwich constructed precast walls
- Timber doors and frames
- Curved, skillion or gabled roof option
- Category 5 cable throughout
- Ceiling fans throughout
- Fly screens to all windows
- Quality joinery + fittings throughout
- Stainless steel appliances
- WELS rated tap ware
- Back to wall toilet suite

### OPTIONAL EXTRAS

- Pigmented concrete floor
- Glass splash backs + stone benches
- Endless Solar hot water system
- In-slab heating to bath, ensuite and study to south
- Category 7 cable throughout to communications hub
- Solar chimneys
- Cent-a-meter
- Rainwater tanks
- Pump to switch between tank + mains
- Verandah and terrace to south
- Steel pergola and terrace to north Family / Kitchen / Dining
- Photovoltaic system
- Grey water system
- Adjustable shade awnings
- Sustainable organic edible garden design
- Courtyard walls



## BALANCED LIVING BUILDING ENVIRONMENTS THAT DON'T COST THE EARTH

### STRINE ENVIRONMENTS

Unit 4, 33 Lorn Rd  
Queanbeyan ACT 2620

P 02 6282 4877 F 02 6281 3159

E mail@strinedesign.com.au

W strinedesign.com.au

\* Subject to conditions



**STRINE**  
ENVIRONMENTS



**STRINE**  
DESIGN



**STRINE**  
BUILDING